



For Immediate Release

Contact: Peter Donovan  
(360) 630-6246  
[peterd@mountvernonw](mailto:peterd@mountvernonw)

[a.gov](#)

**June 18, 2020**

MOUNT VERNON—A new parking lot at the entrance of Little Mountain Park will be paved on Friday (June 19).

Parks staff learned this morning that the long awaited paving of the new lot is all set to take place, and will likely cause some traffic interruptions tomorrow as asphalt vehicles go to and from the site, from 7am to 4pm.

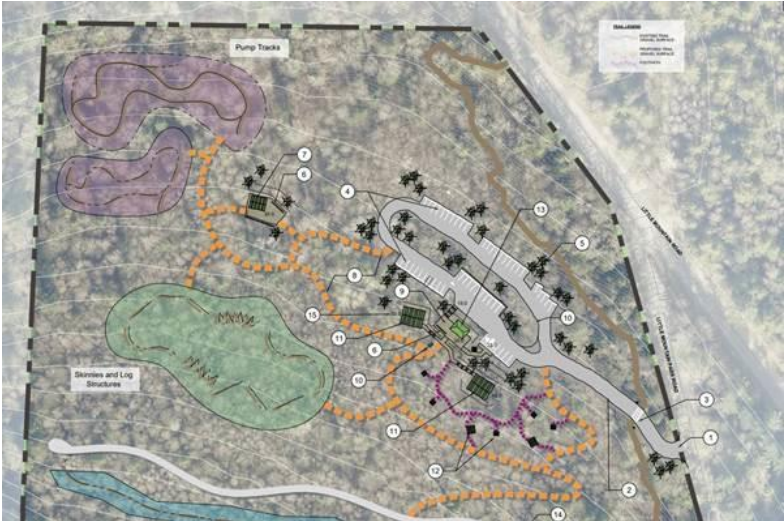
“I think most of our Little Mountain Park users will welcome this small disruption, in light of the incredible amenity that this lot will provide our community in the future,” Parks Director Jennifer Berner said.

Parking has always been a challenge at the entrance to the Park. The current project aims to create approximately 50 new parking spaces, with an access road and landscaping.

#END#



New Little Mountain parking lot is ready for paving



A conceptual design shows the split-level parking lot to the west of Little Mountain Road



From October 2019: Landscape construction at the lot site