

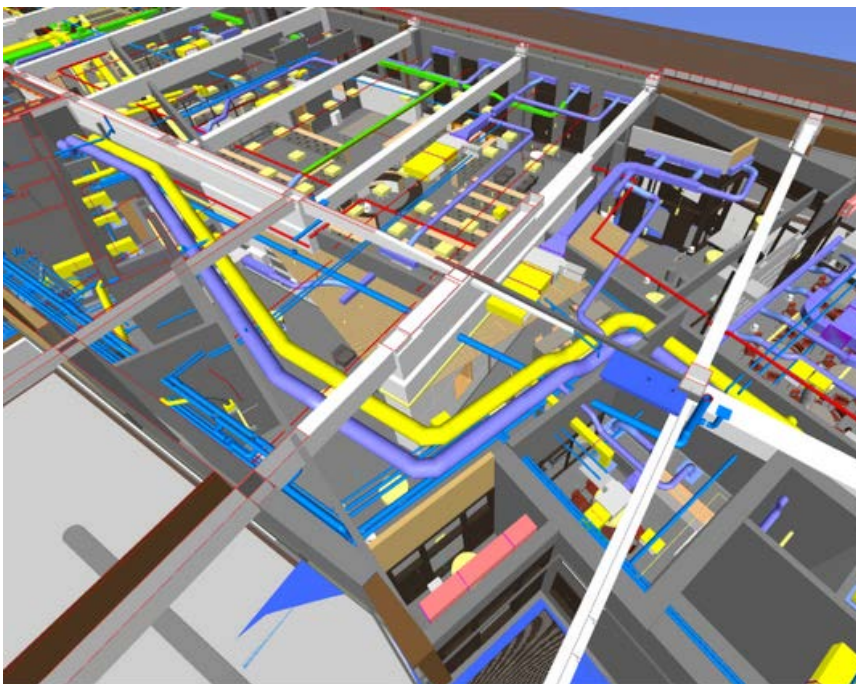
Mount Vernon Library Commons

Monthly Update - December 2022



CURRENT ACTIVITIES

Lydig Construction and their subcontractors have been busy installing and rerouting utilities, and preparing the site for foundation work which will begin in January. The utility relocation work at the adjacent south properties is complete. Ground improvement efforts (rammed aggregate pier installation) are ongoing, with over 600 piers have been installed to date.



PROJECT HIGHLIGHT

The Mount Vernon Library Commons project team is currently employing the use of Building Information Modeling (BIM) software. (See image bottom left) BIM is an intelligent software modeling process that architects, engineers, and contractors can use to collaborate on a building's design, and construction. Through the use of BIM, all major architectural, structural, mechanical, electrical, fire protection, and plumbing systems can be modeled in 3D.

This effort prevents clashes in the field, reduces re-design during critical stages of construction, and provides confidence to installers. Utilizing BIM is helping the project team to avoid and mitigate risks, and improve communication and collaboration.

PROJECT TRAFFIC AND UTILITY IMPACTS

- 3rd St. will be closed between W. Kincaid and W. Broadway for the duration of the project.
- Kincaid St. westbound left-turn lane is temporarily designated as a "U-turn only" lane.
- Currently northbound 2nd St. at Kincaid and eastbound Kincaid between 2nd and 3rd streets are experiencing partial lane closures.
- The pedestrian crossing at 3rd & Kincaid will be impacted in January, though access going north and south will be maintained. Watch for signage in the coming weeks.
- For questions or concerns regarding project impacts, please contact the City at Libcomconst@mountvernonwa.gov or call 360-419-3252



SCHEDULE

Scheduled activities over the next few months will focus on ground improvements, utility work, and building foundations. Erection of the tower crane will begin in January, so expect to see the building start going vertical shortly after that!

