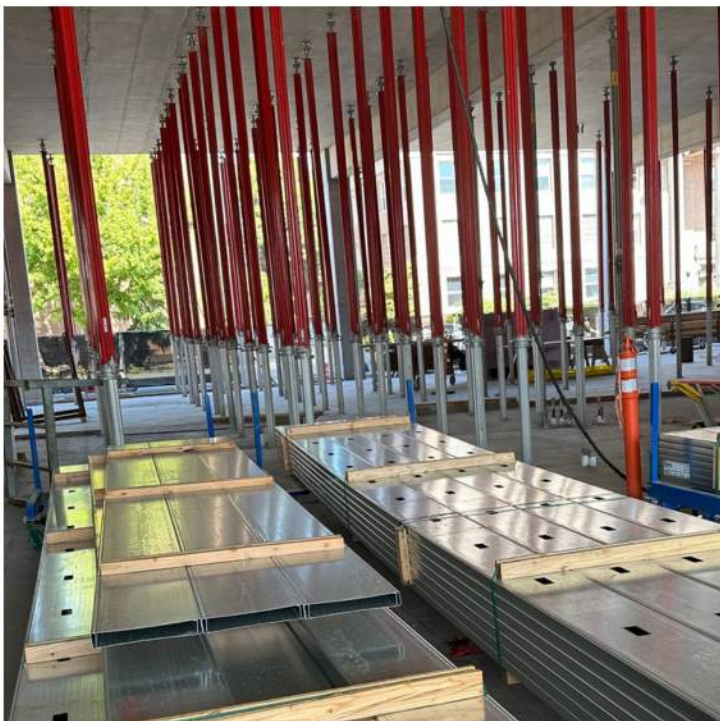




CURRENT ACTIVITIES

The installation of the elevated parking decks is nearing completion, with the final 279 cubic yards of concrete poured on September 27th. Efforts into the month of October will focus on the installation of the vertical steel structures, barrier walls, installation of mechanical, electrical and plumbing components, construction of the west and east stair towers, and continued build-out activities on the first floor.



PROJECT HIGHLIGHT

Steel framing is a building technique with a “skeleton frame” of vertical steel columns and horizontal I-beams, constructed in a rectangular grid to support the floors, roof and walls of a building, which are all attached to the frame.

The structural steel framing on the Mount Vernon Library Project has a few different purposes. Most of our steel is supporting the pre-cast stair towers or the various exterior finishes such as terracotta screening, solar panels, and fritted glass panels.

The terracotta, solar panels, and glass panels have different shapes and weights, so they have unique wind, gravity, seismic, and lateral forces and have different arrangements of steel connections to support those different forces.

The tallest piece of steel incorporated into the project is a beam that will support the terracotta screening at the west stair tower, 58'-6" above the first floor. (pictured above)

PROJECT TRAFFIC IMPACTS

- 3rd St. will be closed between W. Kincaid and W. Broadway for the duration of the project.
- For questions or concerns regarding project impacts, please contact the City at Libcomconst@mountvernonwa.gov or call 360-419-3252



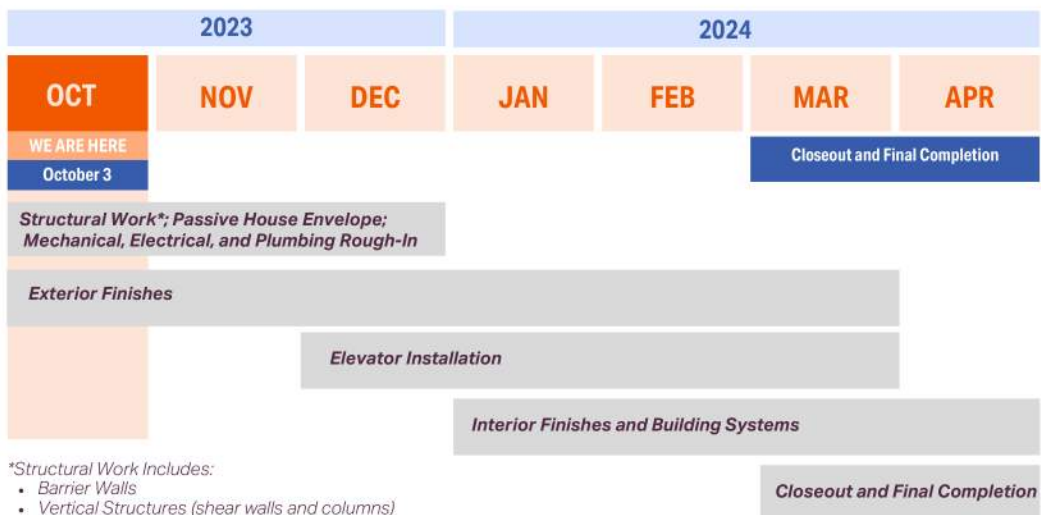
SCHEDULE

The majority of scheduled activities into the month of October will be focused on the construction of the vertical steel structures and barrier walls. Early buildout activities on the 1st floor are also well underway!

City of
**MOUNT
VERNON**

**CITY OF MOUNT
VERNON**

Milestone Timeline



*Structural Work Includes:

- Barrier Walls
- Vertical Structures (shear walls and columns)
- Deck Forming
- West and East Stair Towers